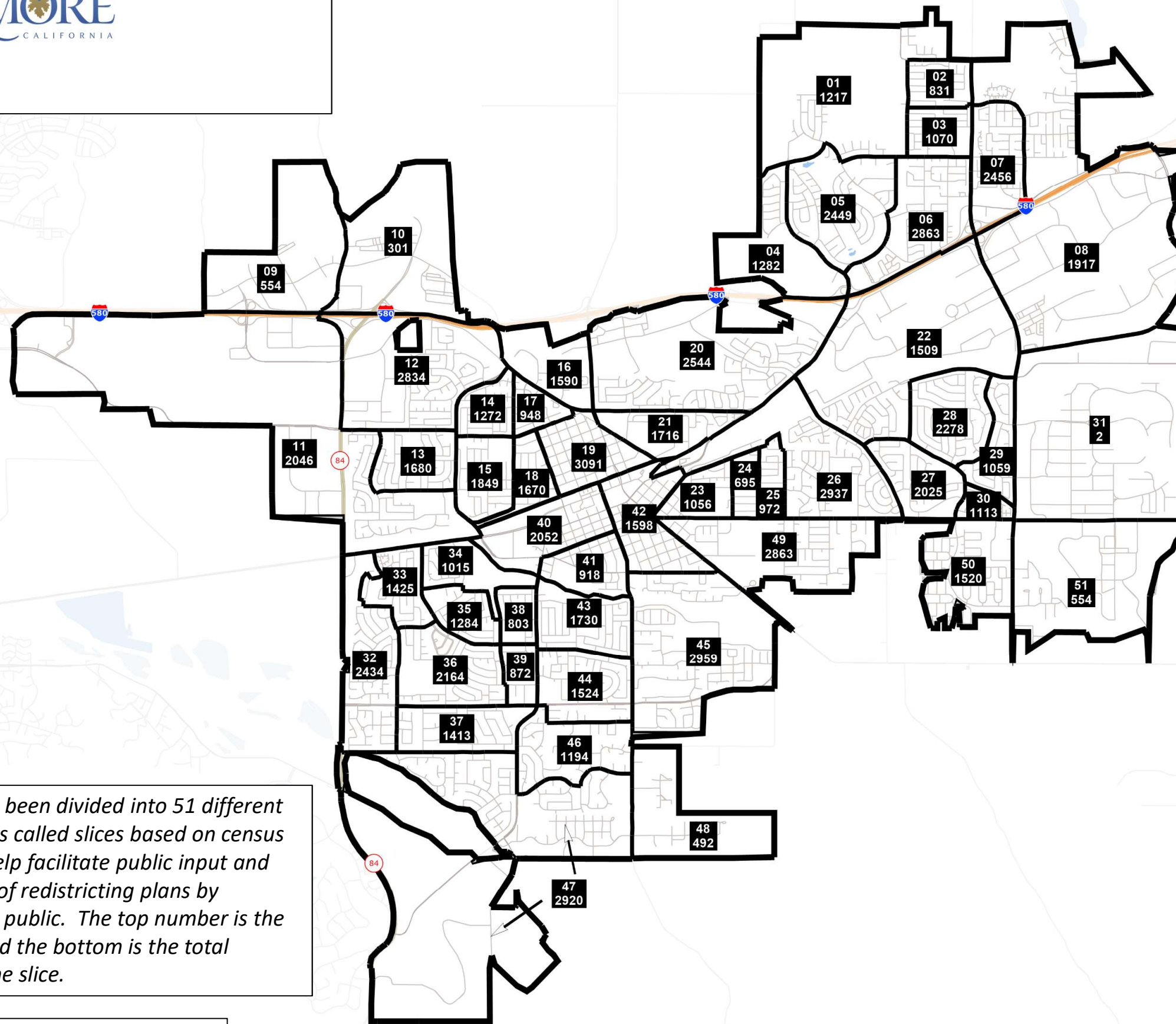


Population  
By Slice\*

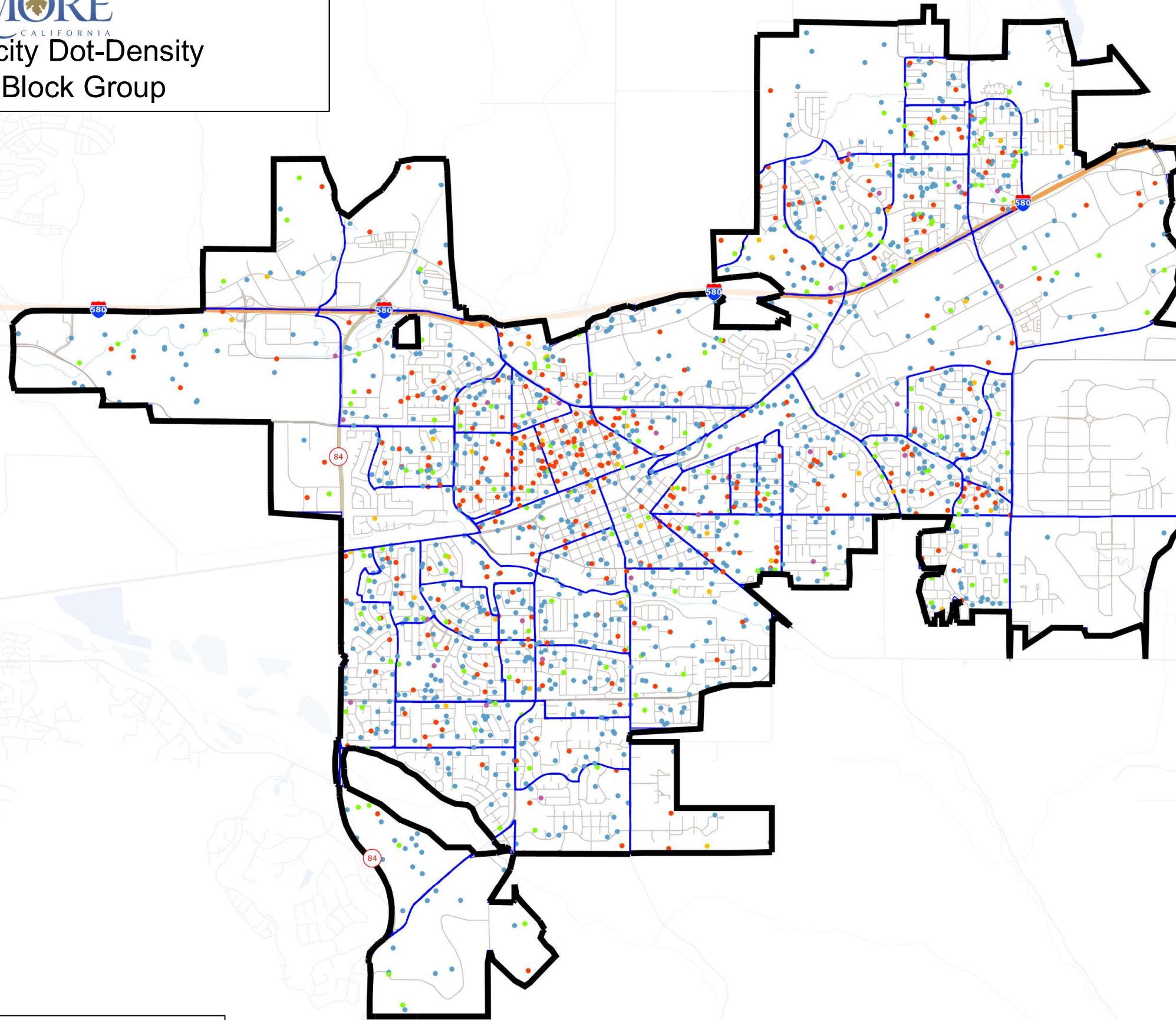


\* Livermore has been divided into 51 different geographic units called slices based on census geography to help facilitate public input and the submission of redistricting plans by members of the public. The top number is the slice number and the bottom is the total population of the slice.





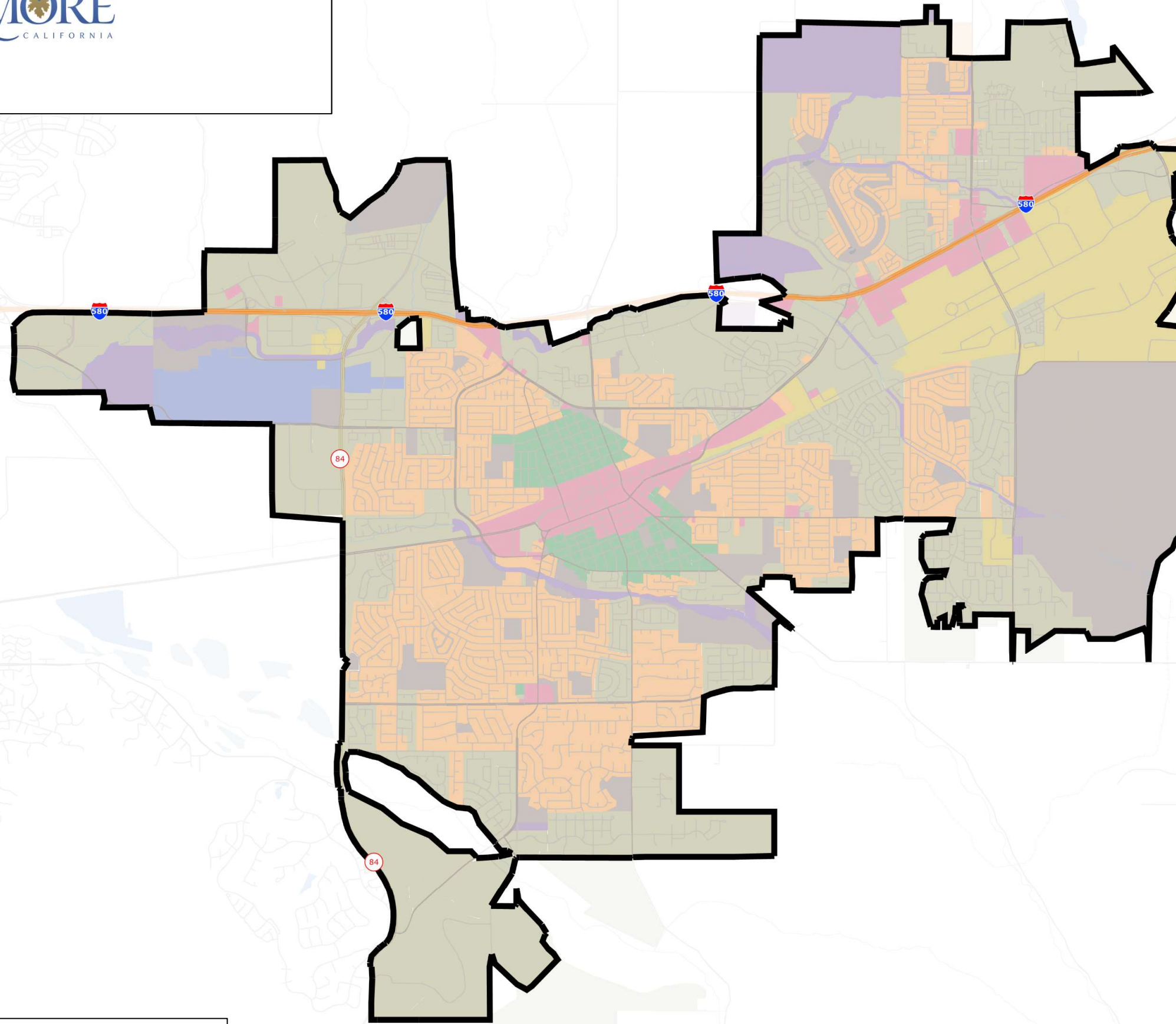
Race/Ethnicity Dot-Density  
By Census Block Group



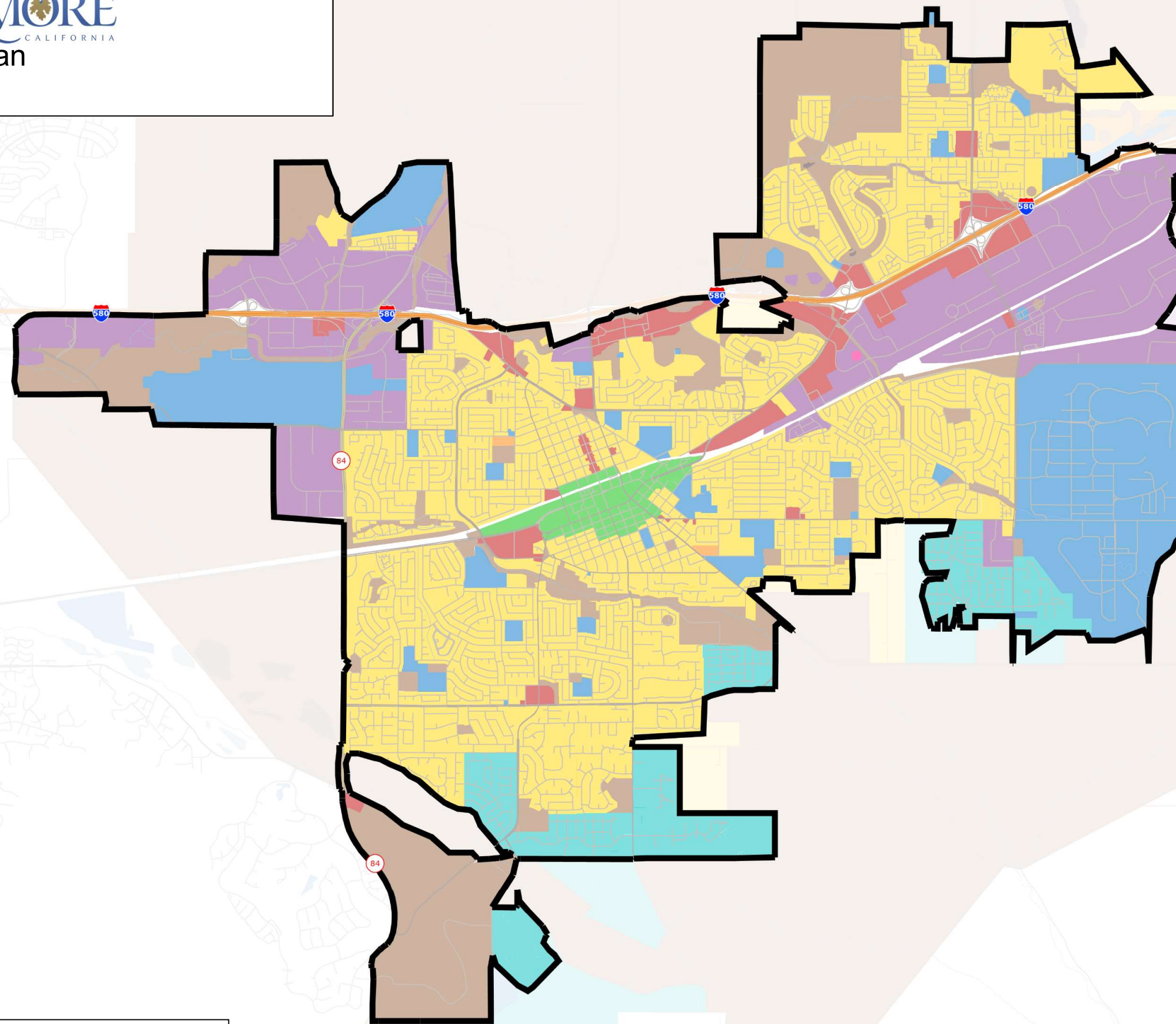
Map layers

- Street
- Block Groups
- Race/Ethnicity (50 per dot)
  - Non-Hispanic White
  - Latino
  - Asian
  - Black
  - Other



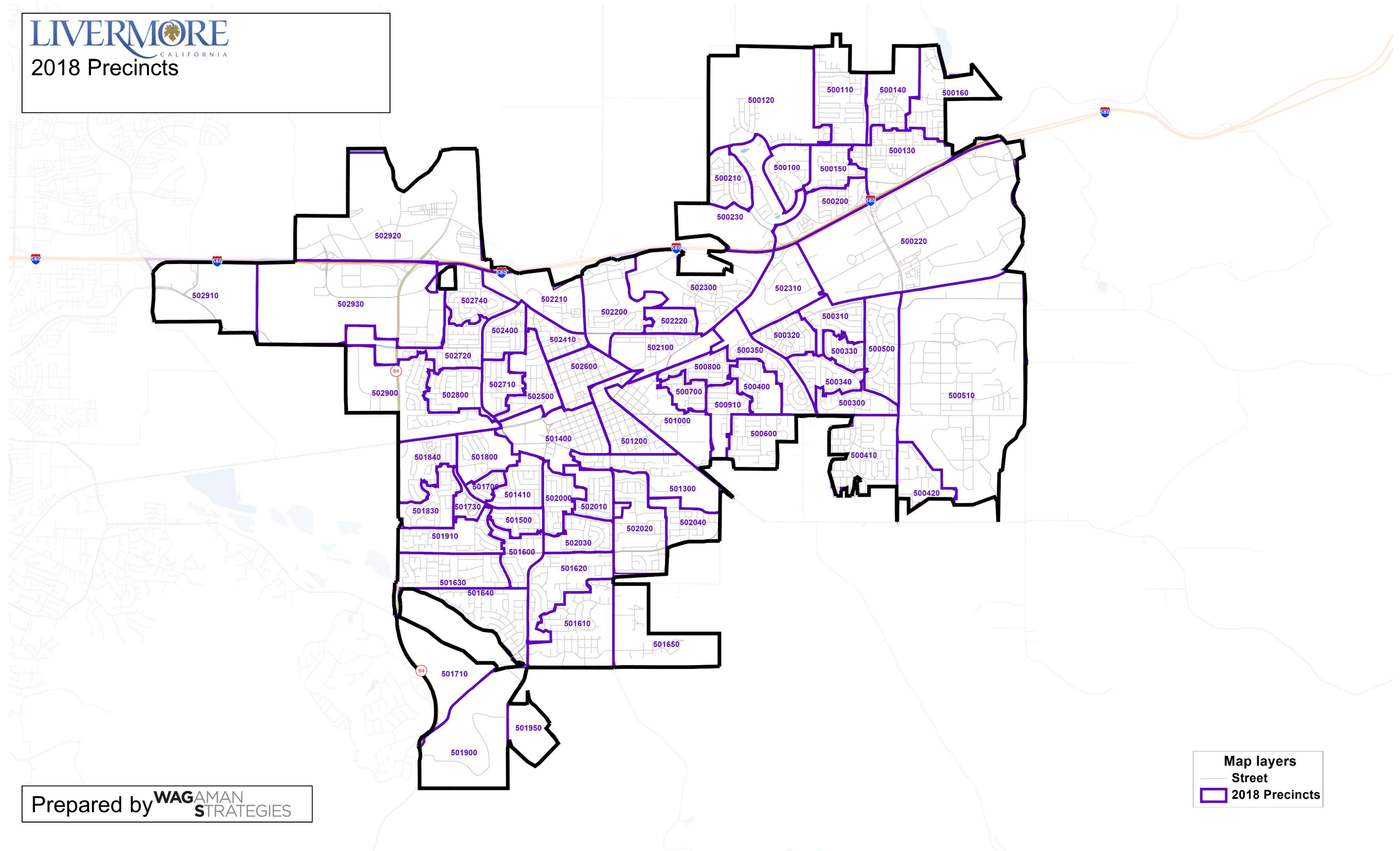








**LIVERMORE**  
CALIFORNIA  
2018 Precincts



Prepared by **WAGAMAN**  
STRATEGIES

Map layers  
Street  
2018 Precincts